

PLUG MATERIAL REFERENCE CARD

Spider webs

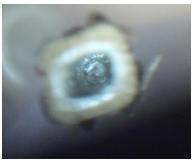


Photos courtesy of The Bees' Needs, University of Colorado Boulder

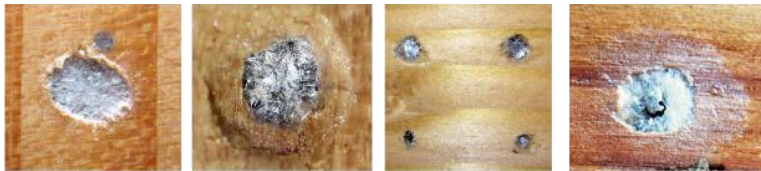


C.Satyshur

Cellophane



C.Satyshur



Photos courtesy of The Bees' Needs, University of Colorado Boulder

Resin with or without debris



Photos courtesy of The Bees' Needs, University of Colorado Boulder

Grass



Photos courtesy of The Bees' Needs, University of Colorado Boulder

Plant fibers with or without debris



Photos courtesy of The Bees' Needs, University of Colorado Boulder

Whole leaf or petal pieces



Photos courtesy of The Bees' Needs, University of Colorado Boulder

Chewed leaves



Photos courtesy of The Bees' Needs, University of Colorado Boulder



C. Satyshur

Wood

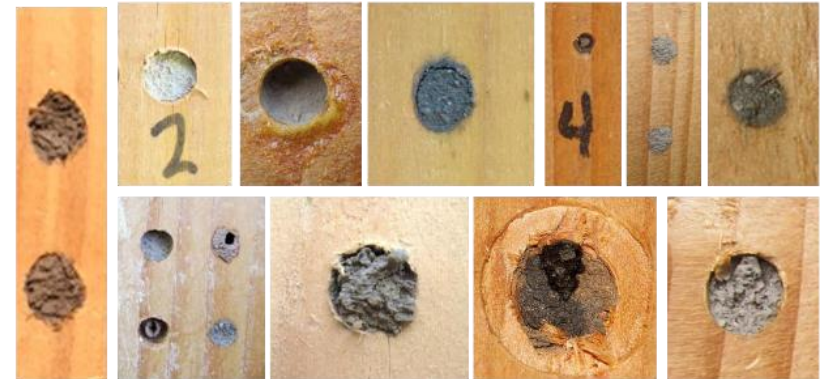


Photo courtesy of The Bees' Needs, University of Colorado Boulder

Mud or sand



C. Satyshur



Photos courtesy of The Bees' Needs, University of Colorado Boulder

Loose debris



Photos courtesy of The Bees' Needs, University of Colorado Boulder